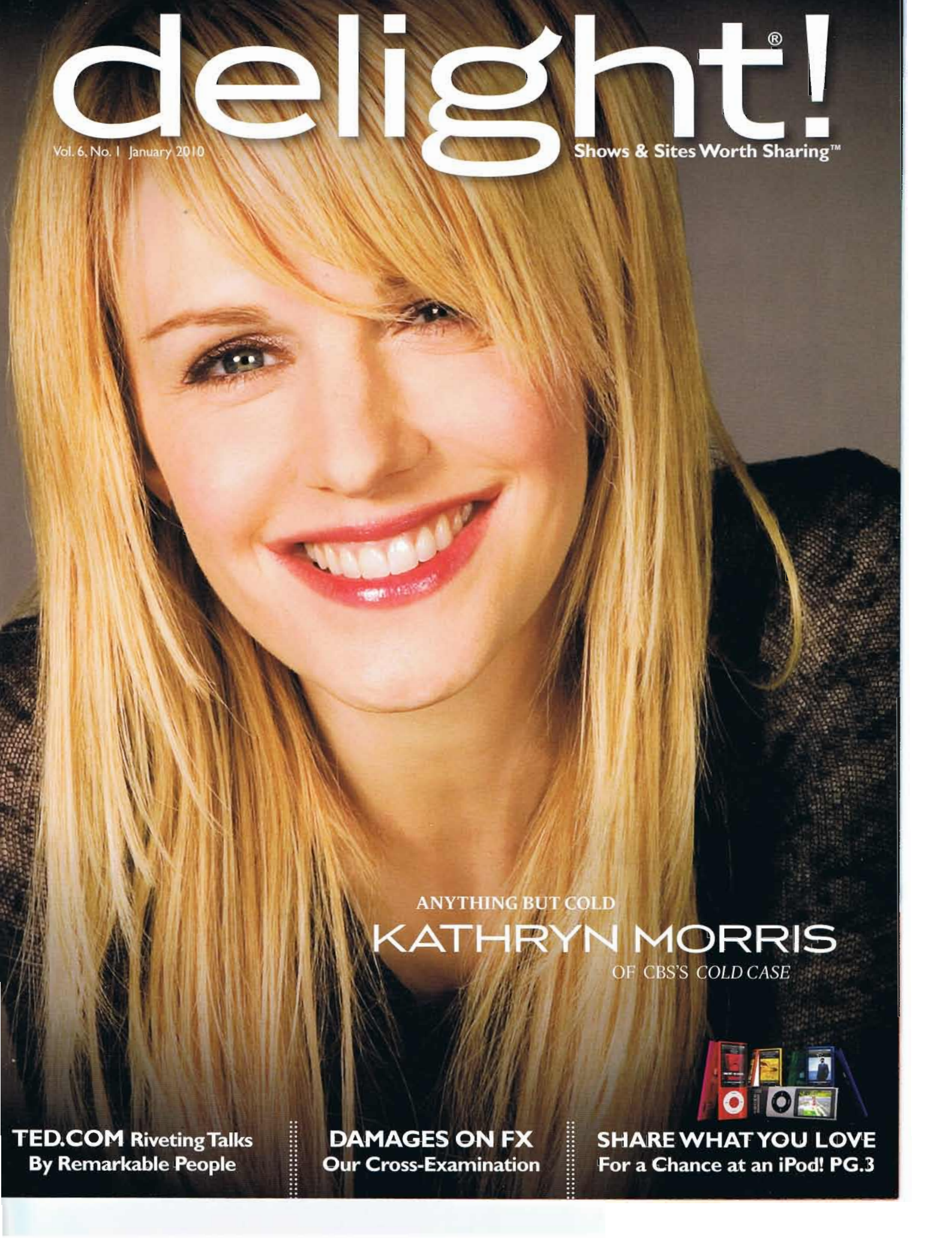


delight![®]

Vol. 6, No. 1 January 2010

Shows & Sites Worth Sharing™



ANYTHING BUT COLD

KATHRYN MORRIS

OF CBS'S COLD CASE



TED.COM Riveting Talks
By Remarkable People

DAMAGES ON FX
Our Cross-Examination

SHARE WHAT YOU LOVE
For a Chance at an iPod! PG.3

> THE INTERROGATION OF KATHRYN MORRIS

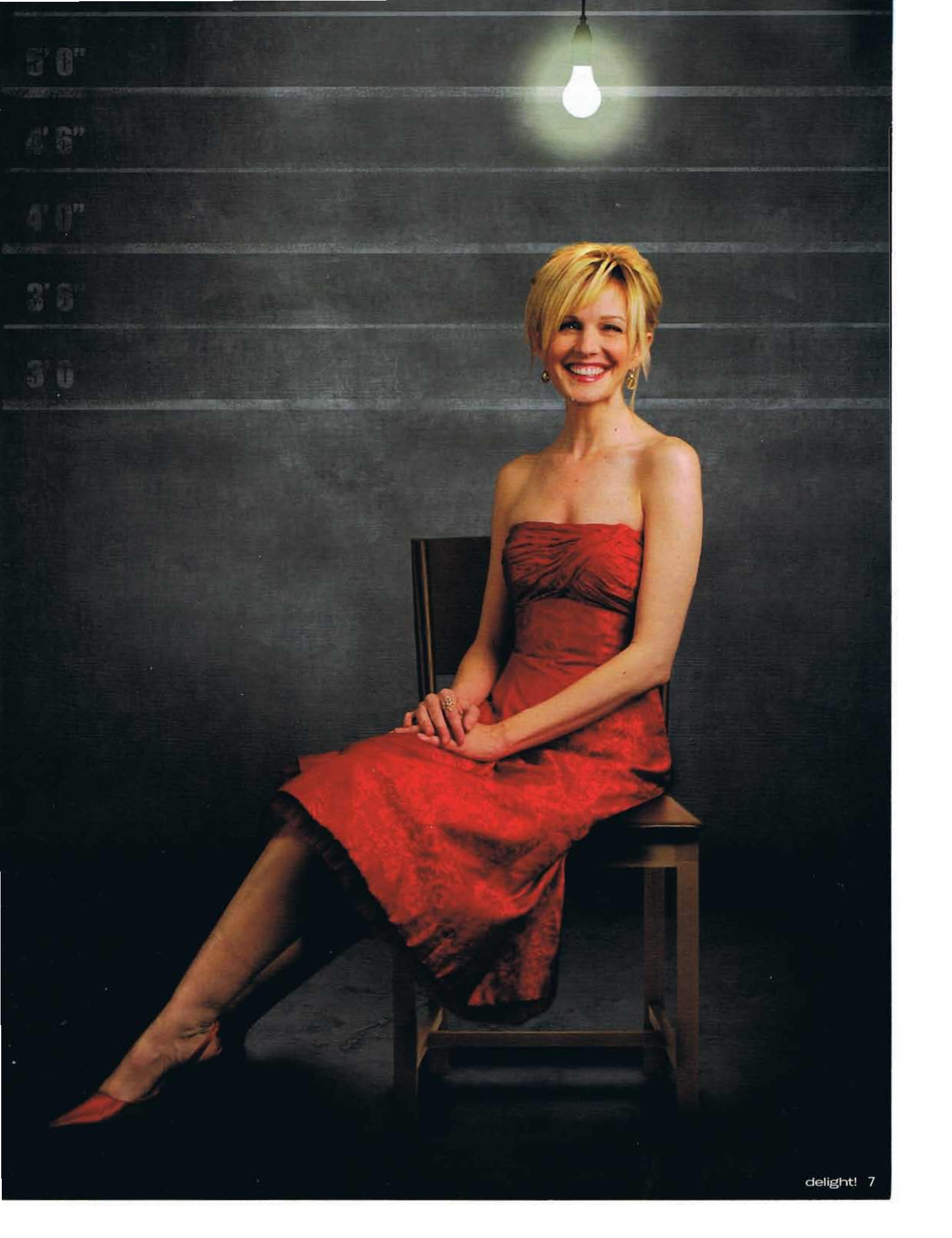
SHE SOLVES CRIME ON
COLD CASE, IS AN
AMATEUR CHEERLEADER
AND, IF THERE'S TIME,
RIDES GO KARTS

BY ERIC BUTTERMAN

Kathryn Morris had a long climb to Hollywood success, but once she got there, she stayed.

Talking to Morris as the seventh season of *Cold Case* has been picked up, she's excited to resume the role of Lilly Rush, a no-nonsense detective who can fool criminals with the best of them, all while fooling herself into thinking she can go through life alone. If there are only bits of back story and off-duty moments woven into *Cold Case*, it's because many detectives Morris has met are married to their work, and do, in fact, destroy their personal

lives with murders that haunt them, even after they're solved. "My character is incredibly successful at dealing with strangers, yet she's so vulnerable with people in her life," Morris assesses. "Whether it's dealing with her estranged sister or a strained relationship with a father she barely knew, you know she wants to try and resolve things—but she sometimes just pushes them away with the pain she feels." >



5'0"

4'6"

4'0"

3'6"

3'0"

THE COLD FACTS

Want to start watching *Cold Case* and be caught up? Because the show mostly focuses on cases, there isn't a lot of back story you'll need to learn. But these four facts will put you hot on the characters' trails:



LILLY RUSH'S FATHER left her when she was a child and they're trying to reconcile.



DETECTIVE WILL JEFFRIES lost his wife to a drunk driver. He's haunted by this moment in a way that causes this gentle soul to, at times, show angry or even risky behavior.



DETECTIVE NICK VERA rooms with Jeffries out of necessity and they occasionally bring their domestic bickering to work. It provides comic relief, although physically imposing Vera can lose his sense of humor quickly with uncooperative criminals in the interrogation room.



DETECTIVE SCOTTY VALENS is the ladies' man with an on-again/off-again with lab technician Frankie Rafterly. There's never been anything between him and Rush, but equally bad in love, you wonder if there will be.

WATCH: CBS, SUNDAYS 10/9PM C

Dealing with such serious subject matter forces Morris to leave town once in a while or at least distract herself from work when she's home. "I love to travel," she shares. "I know someone who has a farm in Utah. A two-week stopover there shows you that there's a world outside of Hollywood ... When I'm home I don't watch many dramas because I'm literally surrounded by murder all day. I need to smile."



Morris in character on *Cold Case*

Morris gave everyone a smile one day on the set of *Ellen*, letting

fans see a side of her which Lilly Rush wouldn't so easily display. Ellen DeGeneres casually mentioned catching wind of Morris' yearning to become a Dallas Cowboys cheerleader. Suddenly, out came the outfit and an urging to live out her dream. The scene, which you can catch on YouTube (search: Kathryn Morris cheerleader), reveals the briefest moment of hesitation from Morris. *This could be great, this could be a disaster.* Morris chose the first thought and came out after the break looking like someone who could absolutely fill the role—and the short shorts! Her pom-poms aflutterin', she began to do a cheer then laughed her head off when she used a Dallas Cowboys player's name who had long since retired. It was as if she was a little girl again and in the moment. "Someone working on the show was part of a photo shoot with me weeks before," Morris recalls. "That's the only way they could have gotten my size right. I got into that outfit, shook my head and said, 'Hey, you only live once.'"

And that same attitude has her taking up motocross and even being a partner in Pole Position Raceway, a go kart center with locations in



Kathryn Morris attends the Celebrity Racing Charity Event at the Pole Position Raceway in Corona, California.

Oklahoma, Nevada and California. "They're really doing well and it just lets me be a part of something that's a lot of fun," she says. Morris even has a

motocross bike, yet admits she can't ride it as long as she's on the show because of the risk of injury. "One day I'm going to do some crazy moves on that thing!" she clucks.

Some of that devil-may-care attitude, she says, comes from those same detectives she's met. "Because the show has gone on for years we've really developed strong relationships with detectives," Morris offers. "My character is based on Tim Bass in Philadelphia—when I hear him talk about a case you see the devotion and fire in his eyes to solve it. They take some real chances in their profession and you can tell it's worth it to them." Of course, she admits there's a down side to her friendships with detectives as well. "The teasing they give me," she laughs. "That's the worst! A detective will say, 'You looked too hot in that scene—my suspects would have given you more crap.'"

Never Cold

Morris sees a bright future for the show and for herself. In a long-term relationship with boyfriend David Barrett, a multi-talent who once produced *Cold Case* and was a pro motocross racer, they've decided to go to the next level. No, not marriage, but opening up a production company together. Recently commissioned to shoot a pilot for a show she's producing, Morris says it was one of the most exciting days of her career. "I enjoy being in front of the camera but I wanted to be even more invested," she says. One thing she's still invested in is her fans, reminding herself to leave them with a positive experience whenever they have the courage to say hello. "I was always taught by my family to try and be kind and respectful," she says. "I believe it helped my career and makes life a little easier." **d**

