



THE IRIS INN

WAYNESBORO, VIRGINIA

Imagine the tree house of your dreams—one with cutting edge furnishings and incomparable views. Would you wish for a fireplace, flat screen television and a secluded personal hot tub? Would it have a rainwater shower with a view of the woods, private balcony, small kitchen, and even motorized shades that descend with a push of a button? Could such a luxurious tree house exist? It does—in the Iris Inn's new mountain cabins.



At the crossroads of Skyline Drive and the Blue Ridge Parkway, the Iris Inn is a wonderland for guests seeking solitude, comfort and the beauty of nature. It boasts the company of Innkeepers Heidi and Dave Lanford, who have an

uncanny ability to anticipate your needs and desires before you even think of them.

The new tree houses are their brainchild, and they've included every indulgence in these freestanding cabins built on a steeply sloping hillside. They are designed for couples yearning to feel pampered with amenities, and inspired by spectacular sunsets.

The Iris Inn also has a modern, multi-level guesthouse with rooms and cottages featuring soaring ceilings and Jacuzzi tubs. Perched on a ravine, most of the rooms face the Shenandoah Valley's textured hills and dales. The hectic world seems far away when guests nestle into a rocking chair on the deck, or read by the stone fireplace.

Adjacent to George Washington National Forest, the Inn will supply a picnic for guests exploring nearby hiking trails. One trail leads to

▶ (Clockwise from top): Couples cabin; modern bedroom; modern rain shower and hot tub on the private, screened balcony



Crabtree Falls, the highest waterfall in Virginia, and another, a wooden footbridge that crosses the Tye River. Within 30 miles of the Inn are 28 wineries and four president's homes. Situated between Charlottesville and Staunton, there is an abundance of artisan restaurants, boutiques, art galleries and bluegrass

25 HOUR DRIVE

ACTIVITIES

(on premises):
Hiking / Wine tasting / Mountain biking / Wildlife photography / Birding
(off premises):
Craft breweries / Vineyards / P. Buckley Moss

Museum / Touring presidential homes / Fly fishing / Quick access to Skyline Drive and Blue Ridge Parkway / Downhill, cross-country skiing and snowboarding / Shopping and art galleries / Frontier Mu-

seum / Blackfriars Playhouse Theatre

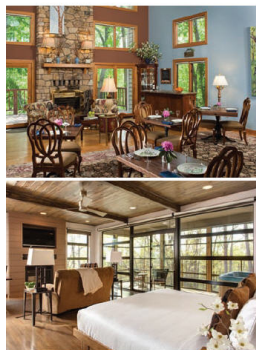
RATES:
\$189-\$279 per night (winter rates)

PACKAGES:
Sip and Ski: includes

two-night cabin stay, two full breakfasts and one boxed lunch to take to ski resort, lift tickets for two to Wintergreen Ski Resort, complimentary wine tasting apéritif, ski. Dates: Dec. 1-March 30, 2014. Rate: \$650

Sip and Spa: Two night cabin stay, two full breakfasts, one picnic lunch, in-room couples massage, private hot tub. Dates: Dec. 1-March 30, 2014. Rate: \$800

44 December 2013



▶ The Great Room in the main part of the Iris Inn and the cabin.

clubs. Or, head to nearby Wintergreen or Massanutten Resort for some skiing and snowboarding.

Frankly, it will be hard to leave the Inn after the hearty breakfast and lure of comfortable surroundings. Just hanging around the property you're likely to see wildlife—black bears, eagles, deer, fox, hawks and squirrels cavorting about.

The Lanfords will arrange private events, custom gifts, flowers, meals or an in-room massage. They host nightly wine gatherings for patrons in the Great Room; it's a lovely place to meet other guests and hear about their adventures. The innkeepers offer tips on local restaurants like Greenleaf, and maps to nearby sites. Free WiFi allows for optional connectivity.

Often, places fall short of our imagination; but guests at the Iris Inn usually leave with a vow to return. Luckily, the memory of a tree house on a mountain stays with you a long time. // The Iris Inn, 191 Chiquapin Drive, Waynesboro, VA 22980; 540-943-1991; irisinn.com

—RS



MIRBEAU INN AND SPA

SKANEATELES, NEW YORK

Not many visitors agree on how to pronounce the town—skinny-atlas?—but everyone seems to have mastered Mirbeau and it's impressive/impressionistic wonders.

Mirbeau Inn & Spa is home to an award-winning 14,000 square foot spa. Think couples' retreat or maybe "girlfriend getaway": outdoor heated aqua terrace, heated foot pool, sauna/steam room, Jacuzzi. The inn also features an elaborate wine bar (complete with an interactive wine station featuring 24 varieties daily), an elegant restaurant and robust group exercise class schedule. The cozy, intimate atmosphere of Mirbeau provides guests with the opportunity to relax, rebalance and reconnect with friends.

Mirbeau's awards include AAAs Four Diamond Award for accommodations and dining, SpaFinder's "Best Spas for Romance" for six consecutive years, Wine Spectator's Restaurant Award Winner, Condé Nast Traveler's "Reader's Choice for Small Resorts and Spas" and Travel + Leisure's "500 World's Best Hotels."

The Inn has 34 guestrooms, each with a fireplace, deep soaking tub and a plush signature Mirbeau bed. For romantic getaways, Mirbeau's cottage rooms are exceptionally popular, as they surround and offer views of the picturesque, Monet-inspired gardens and pond. All first-level

6-HOUR DRIVE

AMENITIES

(at resort and nearby):
Spa / Skiing and snowboarding / Cross-country skiing / Vineyard/wine tours / Water skiing in season / Trout fishing / Boating / Golf / Polo / Hiking / Hot air balloon rides

RATES:

Two-night weekend spa retreat start at \$1,225 (double occupancy). Friday and Saturday breakfast, 4-course dinner one evening

Winter weekend room rates start at \$280 (double occupancy)

See special packages on website.



▶ (top) winter garden; (bottom) spa resting area and Savor Mirbeau dining room